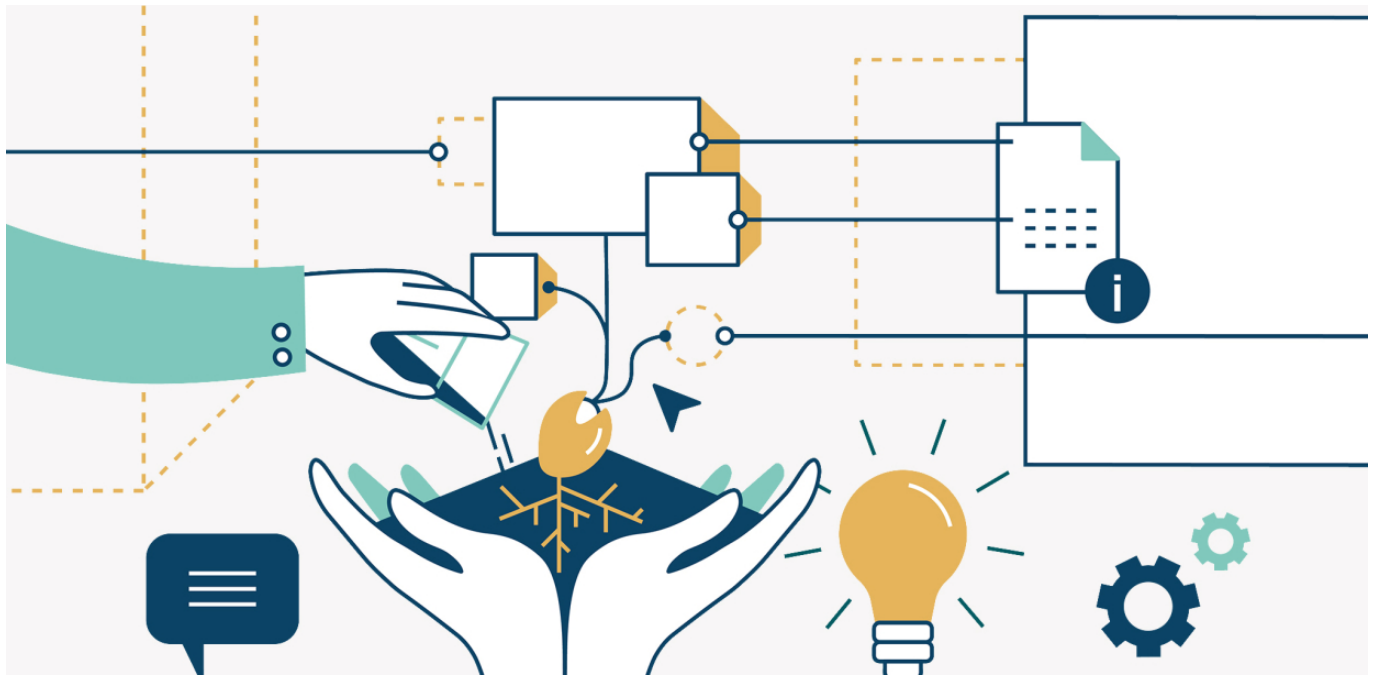


Building Information Modeling for Executives



Various executives and specialists from Appenzell Railways recently took advantage of our BIM-seed training program, which is designed to convey the BIM fundamentals in a nutshell and apply them to one's organization. Having already benefited from a preliminary e-learning phase, the participants were able to directly draft a BIM strategy for their company in the subsequent workshop. The targeted conveyance of information enabled participants within a day to take the initial steps towards introducing the BIM method to their company.

Our services

- Teaching the BIM method and its most important concepts in a compact e-learning
- Conducting a workshop for executives to apply the theoretical learnings to the participants' own organization
- Preparation of the contents in multimedia form, including a forum and glossary
- Drafting an organization-specific BIM strategy and roadmap
- Drafting of a checklist for implementing BIM

Client

Appenzell Railways

Facts

Period	2022 - 2023
Project Country	Switzerland

Contact persons

Hannes Heller
hannes.heller@ebp.ch

Daniela Herzig
daniela.herzig@ebp.ch



BIM seed training with executives and specialists of Appenzell Railways



BIM seed development process at the EBP BoostCamp



BIM seed development process at the EBP BoostCamp