

Pavatex Süd: From Guiding Principle to Participatory Study Commission



The Swiss municipality of Cham and Cham Group AG, the owner of a nearly 4.5 acre undeveloped site in the north of Cham known as Pavatex Süd, have joined forces to work out plans for the site's development. What is currently an industrial site is to be developed for a variety of mixed uses including residential, commercial, educational and recreational areas, while also linking the site as seamlessly as possible to the adjacent Papieri site. To this end, we formulated guiding principles and also designed and carried out a participatory study commission.

Our services

- Moderating the process with definition of objectives and development of guiding principles
- Providing process support with preparation and implementation of a study commission
- Incorporating the 3D model created by Raumgleiter AG
- Qualitative reviewing of shadow analyses
- Comparing project designs based on their floorspaces
- Coordinating the assessment committee and technical experts
- Designing and conducting the public participation events and contributing findings to the study commission
- Documenting the information for further processing in the indicative project

Client

Municipality of Cham, CHH Liegenschaften AG

Facts

Period 2022 - 2023

Project Country Switzerland

Contact persons

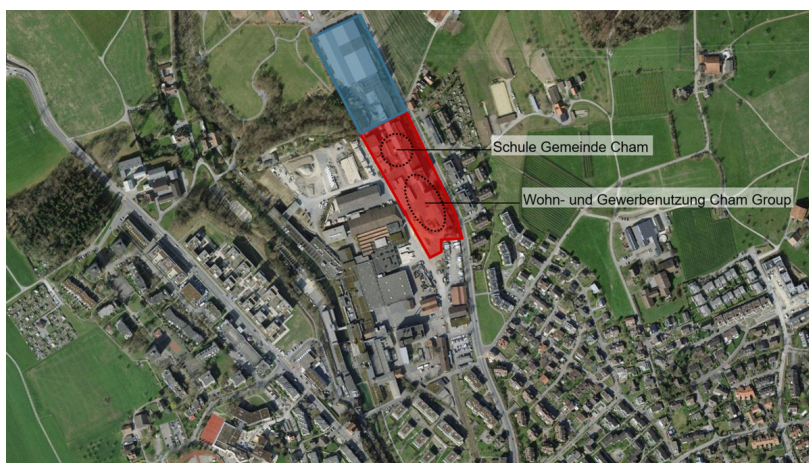
Debora Heitz
debora.heitz@ebp.ch

Sara Hofmann
sara.hofmann@ebp.ch

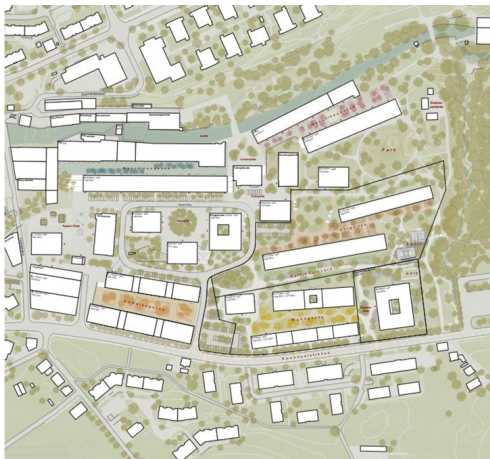
Nicolas Jauslin
nicolas.jauslin@ebp.ch



Aerial view of Papieri and Pavatex Süd site development: photograph by Beat Bühler



Perimeter representation, EBP



Site plan of the winning project: ARGE Ramser Schmid and Enzmann Fischer



3D model (Raumgleiter AG) of the winning project (ARGE Ramser Schmid und Enzmann Fischer)



Visualization 1 of the winning project (ARGE Ramser Schmid und Enzmann Fischer)



Visualization 2 of the winning project (ARGE Ramser Schmid und Enzmann Fischer)

Picture Credits Main Image: © Beat Bühler