

Specialist Planning of Schaffhausen's Ecological Infrastructure



We worked with the Swiss canton of Schaffhausen to develop a plan to secure and enhance the canton's ecological infrastructure. To this end, we used geodata and expert workshops to determine the core and interconnecting areas. Geodata analyses were used to define the type and quality of the various habitats involved as well as potential areas for expansion of the ecological infrastructure. This planning is a basis for Schaffhausen to comply with the federal specifications outlined in the 2020-2024 program agreement.

Our services

- GIS analysis; preparing geodata and development of an automated geodata process for data analysis
- Evaluating data; determining and classifying characteristic values
- Organizing a workshop to obtain input from various local experts
- Collaborating with cantonal specialist agencies and coordinating the project with them
- Presenting and documenting the results

Client

Canton of Schaffhausen, Office of Planning and Environmental Protection

Facts

Period 2022 - 2023

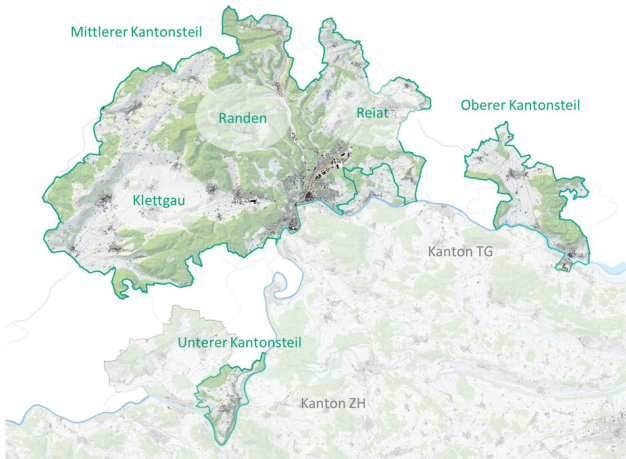
Project Country Switzerland

Contact persons

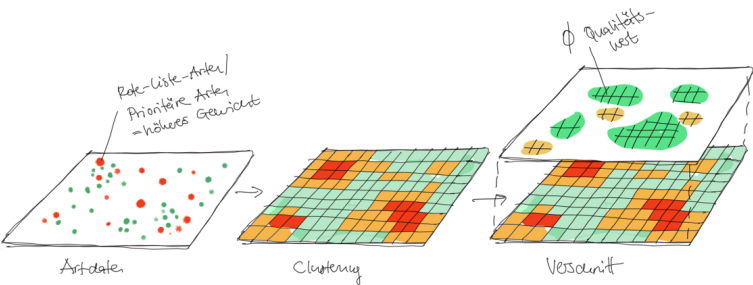
Tobias Tschopp
tobias.tschopp@ebp.ch

Luca Bronzini
luca.bronzini@ebp.ch

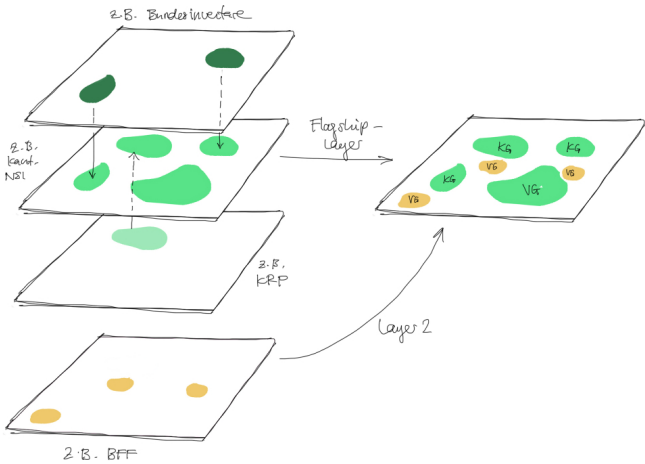
Dr. Ralph Straumann
ralph.straumann@ebp.ch



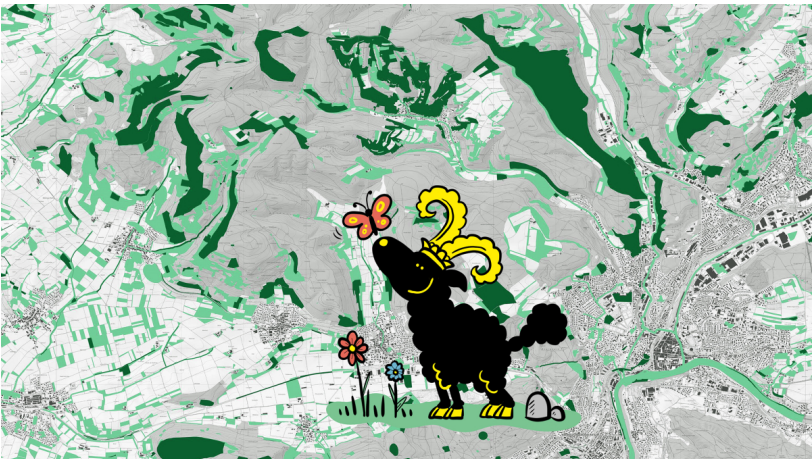
Map of project area



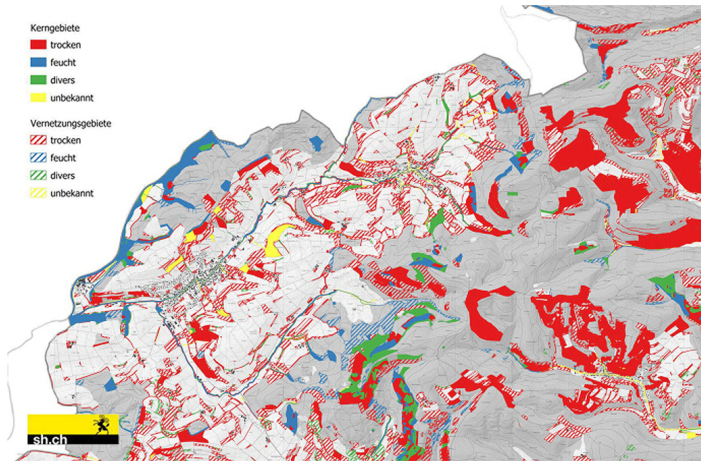
Conceptualization of geodata analysis



Conceptualization of geodata analysis



The Schaffhausen ram is committed to biodiversity (Illustration: Tobias Tschopp)



The core and connectivity areas by habitat type (Layout: AGI Canton Schaffhausen)